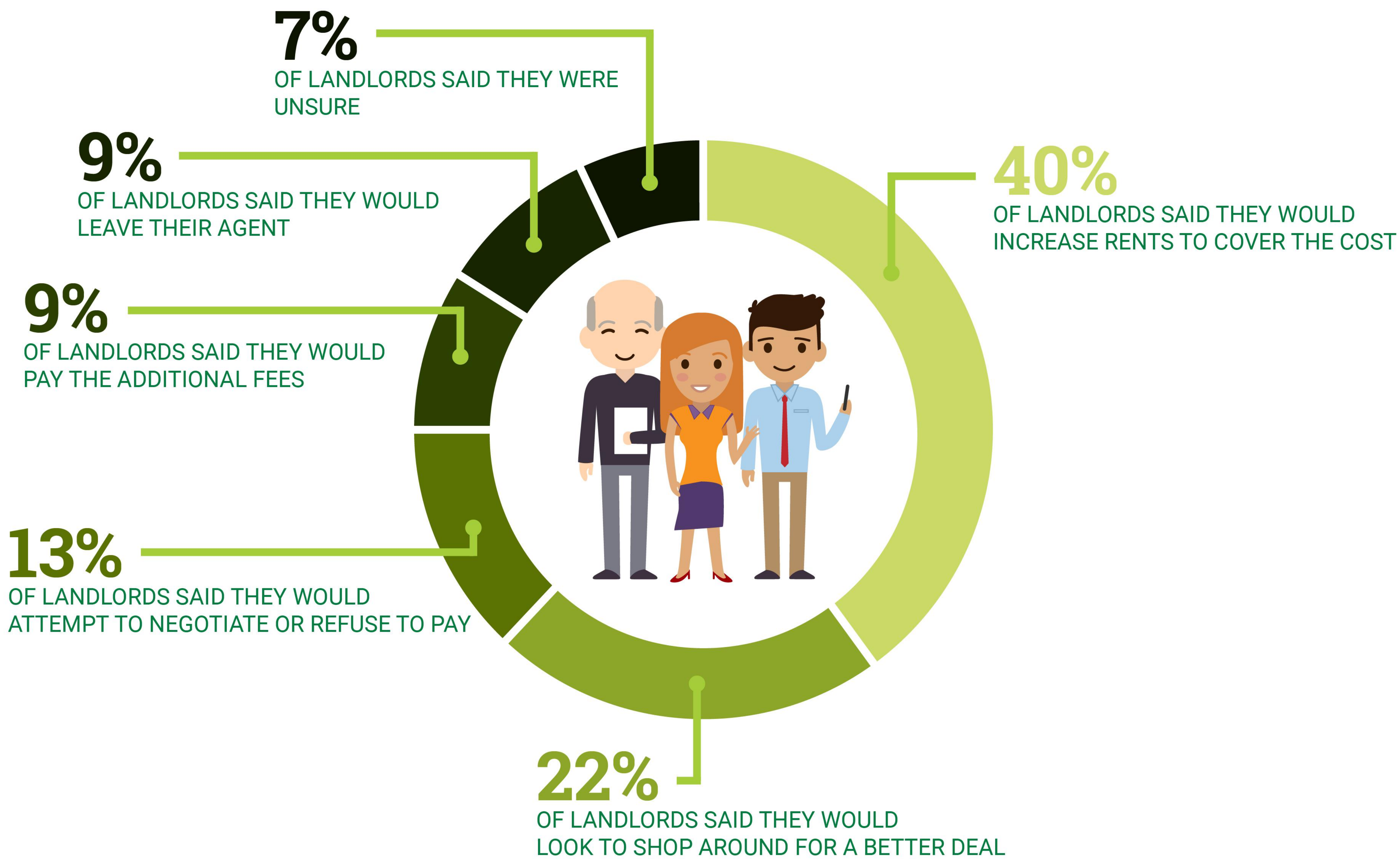


# WHERE WILL ALL THE LANDLORDS GO?

As the ban on letting fees draws closer, will Landlords stick with their current Agents or look elsewhere?



# 71%

LETTING AGENT  
EST. 1990

## OF LANDLORDS WILL CONTINUE WITH A LETTING AGENT EVEN IF PREMIUMS RISE

